

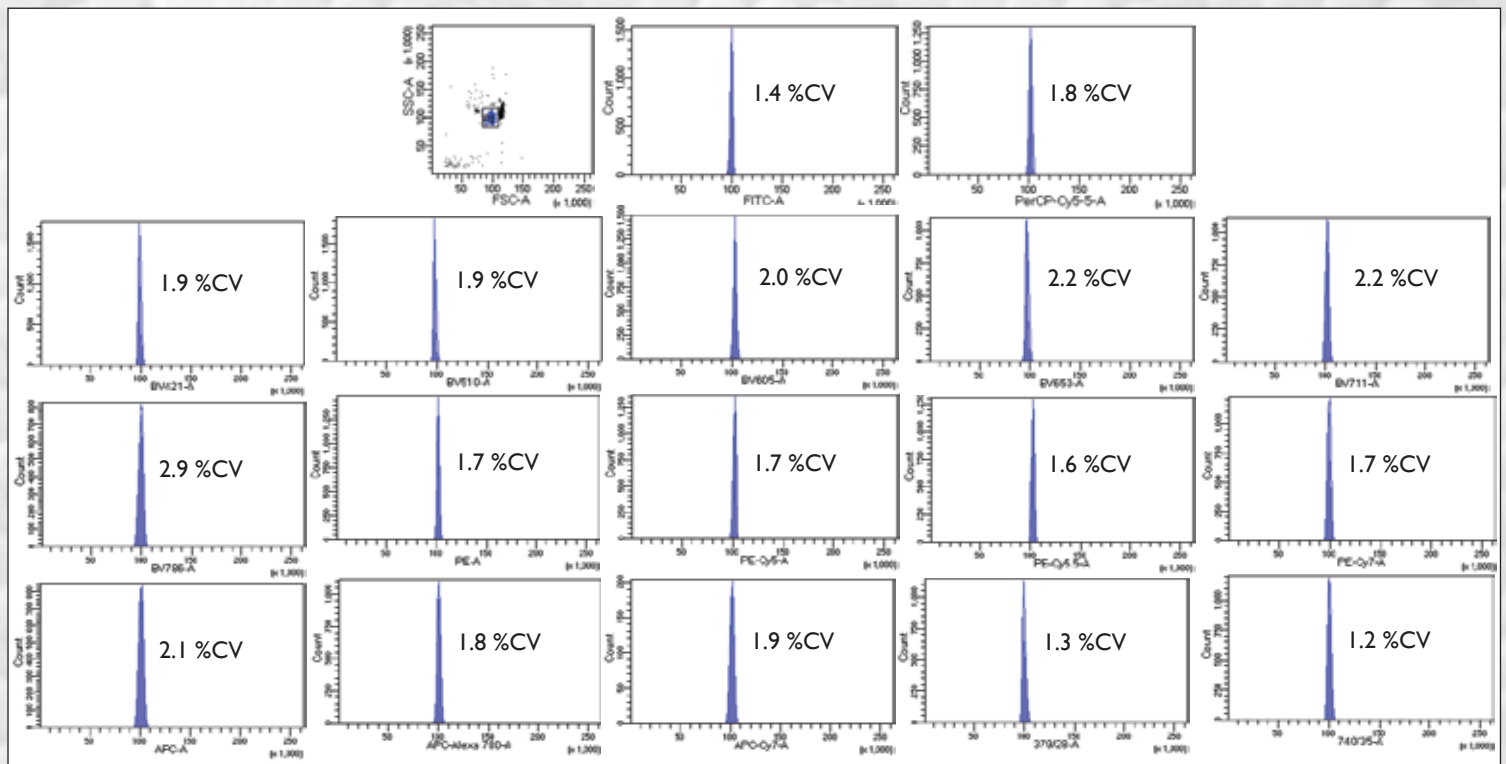
Spherotech

Let the Possibilities Flow

SPHERO™ Ultra Rainbow Fluorescent Particles

One Bead Aligns all Channels

- Aids in the alignment and optimization of all fluorescent and scatter parameters
- Determines if the flow cell is clean and without fluidic blockage
- Measures the coefficients of variation (CVs), peak channels, and histogram distributions to determine the functionality of the flow cytometer.



Histograms of 3 μ m Ultra Rainbow Fluorescent Particles, Cat. No. URFP-30-2

To learn more about Spherotech Ultra Rainbow Fluorescent Particles visit us online

www.spherotech.com

27845 Irma Lee Circle, Unit 101
Lake Forest, IL 60045-5100
(847) 680-8922 fax (847) 680-8927

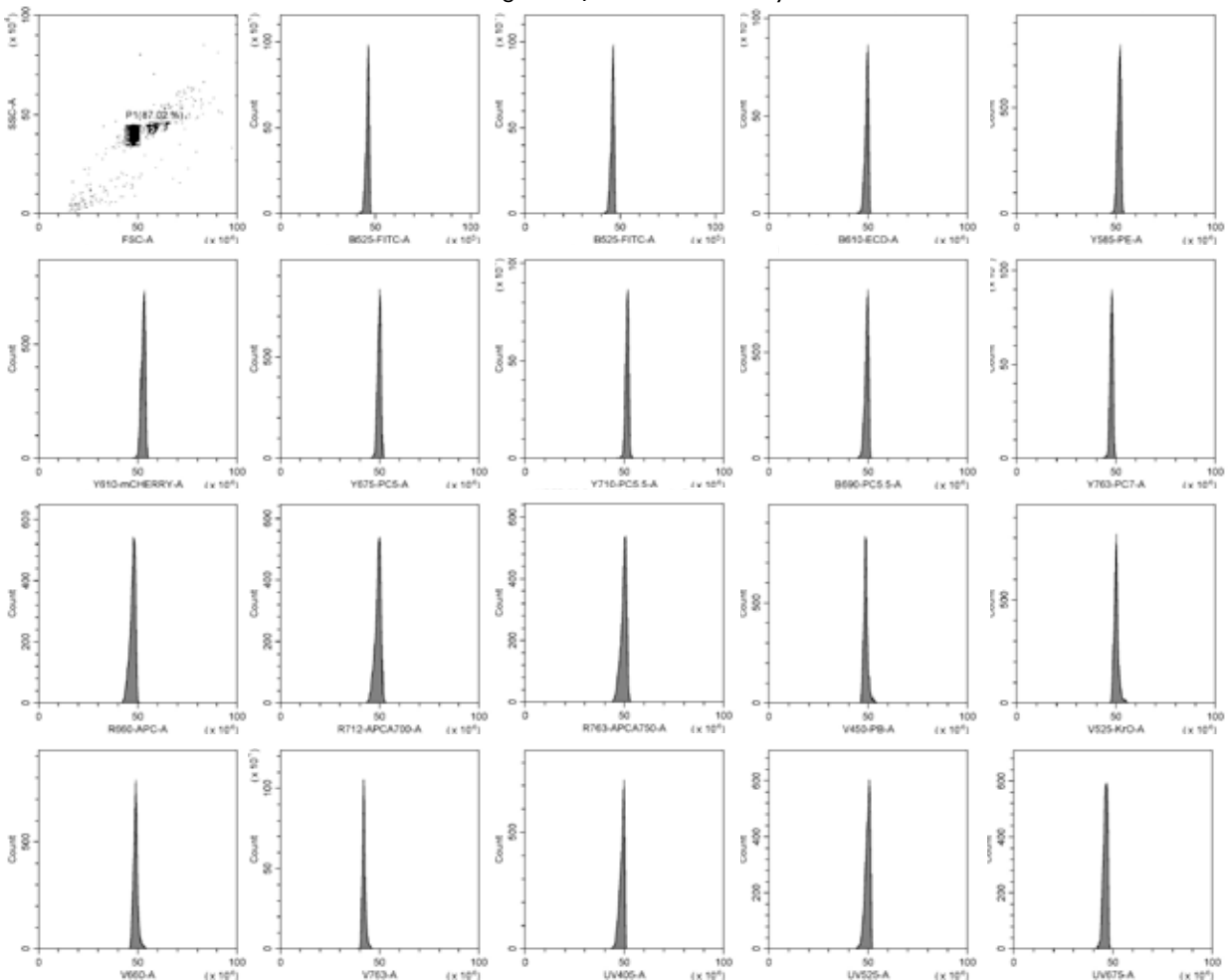


SPHERO™ Ultra Rainbow Fluorescent Particles

- Consists of a single fluorescent monodispersed bead population with tight size and fluorescent % CV
- Enhanced UV to Far Red fluorescent intensities and excellent photostability
- Designed to determine the optical alignment of any flow cytometer from UV to the Far Red
- Evaluates the flow cytometer performance by obtaining the peak channel, histogram shape, and %CV at a specific PMT voltage
- Add a few drops to a milliliter of DI water or saline to use.

Particle Type and Surface	Size, μm	Catalog No.	Unit
Ultra Rainbow Fluorescent, $10^{10}/\text{mL}$	0.1-0.3	URFP-02-5	5 mL
Ultra Rainbow Fluorescent, $10^7/\text{mL}$	0.4-0.6	URFP-05-2	2 mL
Ultra Rainbow Fluorescent, $10^7/\text{mL}$	1.0-1.4	URFP-10-5	5 mL
Ultra Rainbow Fluorescent, $10^7/\text{mL}$	3.0-3.4	URFP-30-2	2 mL
Ultra Rainbow Fluorescent, $10^7/\text{mL}$	3.0-3.4	URFP-30-20	20 mL
Ultra Rainbow Fluorescent, $10^6/\text{mL}$, Ready-to-Use	3.0-3.4	URFP01-30-2K	2x15mL
Ultra Rainbow Fluorescent, $10^6/\text{mL}$, Ready-to-Use	3.0-3.4	URFP01-30-10K	10x3mL
Ultra Rainbow Fluorescent, $10^7/\text{mL}$	3.5-3.9	URFP-38-2	2 mL
Ultra Rainbow Fluorescent, Mid-Range Intensity, $10^7/\text{mL}$	3.5-3.9	URFP-38-5A	5 mL
Ultra Rainbow Fluorescent, $10^7/\text{mL}$	8.1-12.0	URFP-100-2	2 mL
Ultra Rainbow Fluorescent, $5 \times 10^6/\text{mL}$	13.0-17.9	URFP-150-2	2 mL
Ultra Rainbow Fluorescent, 1% w/v	18.0-24.9	URFP-200-5	5 mL
Ultra Rainbow Fluorescent, 1% w/v	25.0-35.0	URFP-300-5	5 mL

Dot Plot and histograms of URFP-30-2 on a CytoFLEX LX



27845 Irma Lee Circle, Unit 101, Lake Forest, IL 60045

Tel.: 800-368-0822 or 847-680-8922; Fax: 847-680-8927; E-Mail: service@spherotech.com

Visit us on the web at <http://www.spherotech.com>